



# USER GUIDE

## (15 inch)

\*Adaptive for 15 - 17 inch mainstream laptops

watch our video tutorials online: [www.notebookwings.com/tutorial](http://www.notebookwings.com/tutorial)

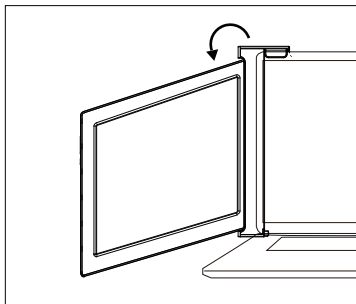
# WARNING

EN

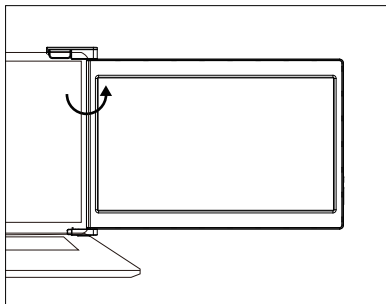
Please handle the tri-screen with care and do not press the screens to avoid damage. Do not exceed its maximum turning angle showing as below:

## Turning angle of screens

Left screen( $0^{\circ}$  -  $235^{\circ}$ )



Right screen( $0^{\circ}$  -  $180^{\circ}$ )



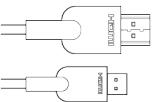
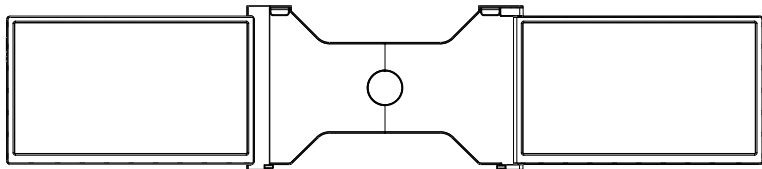
# Contents

- 1 | Parts Overview
- 2 | Inputs and Buttons
- 3 | Choose your cables
- 4 | Set It Up
- 5-8 | Connection Methods
- 9-10 | Laptop Display Configuration
- 11 | OSD Function Introduction
- 12-14 | OSD Setting
- 15 | Tech Specs

# Parts Overview

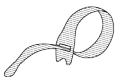
EN

## Tri-Screen



2\*MINI HDMI to  
HDMI cables

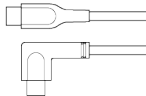
VIDEO ONLY



Velcro Cable Tie  
(Magic Tape)

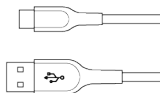
2\*USB-C to USB-C  
(90 degree) cables

VIDEO & POWER



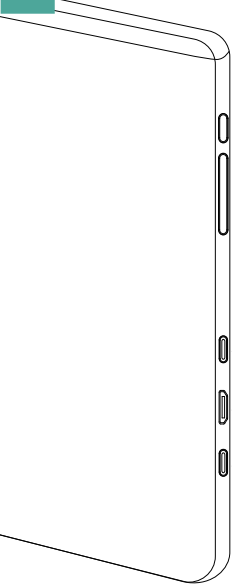
2\*USB-C to USB-A  
cables

POWER ONLY





# Inputs and Buttons



Press the Menu to enter the OSD (On-Screen Display) menu.



Increase the brightness; Enter the Menu, and press it to turn to the next selection; Increase the value



Decrease the brightness; Return to the previous page; Decrease the value



USB Full Functioned Port: Power Supply, Video Signal Transmission



Mini HDMI Port (No Power Supply): Video Signal Transmission



USB-C Port (Power Supply Only): Power Supply, Reverse Charging, Compatible with PD2.0 power supply protocol, Supporting 5-20V voltage input

# Choose your cables

To determine which cables you will use, first identify your laptop's ports using the pictures to the right or reference your laptop's user manual.

If your laptop has two Thunderbolt3/4 / USB-C with DP ports, the simplest way to use the tri-screen is with the two USB-C to USB-C cables provided.

If your laptop does not have any Thunderbolt3/4 / USB-C with DP ports, you will need to use one USB-A to USB-C cable and one HDMI to Mini-HDMI cable for each screen.

If your laptop does not have an HDMI port, then you can use any other video out ports shown to the right along with a simple HDMI adapter.

\*Some laptops have USB-C ports that do not support DisplayPort over USB-C. Please reference your laptop's user manual.

## VIDEO ONLY



HDMI



Displayport



Mini-Displayport



Mini-DVI



VGA



USB 3.0 (with  
HDMI adapter)

## POWER ONLY



USB-A

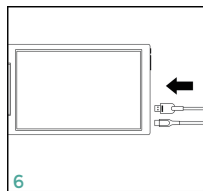
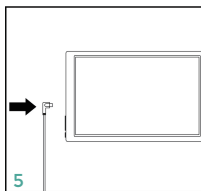
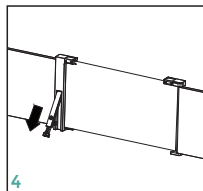
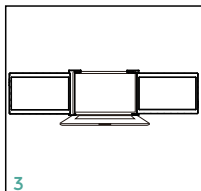
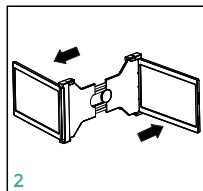
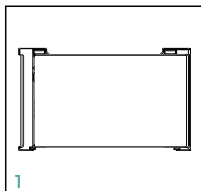
## VIDEO & POWER



Thunderbolt 3/4  
USB-C with DP\*

# EN Set It Up

1. Unpack the triple monitor.
2. Open two screens in the directions as shown in Fig. 2.
3. Place the bracket at the back of the laptop screen and install it well with the bracket clamping the screen.
4. Lift up the stand and stretch to its end. Press and hold the button to retract the stand.  
(The stand is embedded at the back of the triple monitor, which can offer extra support to the triple monitor.)
5. Using the necessary cables, plug one end of the cable into the triple monitor and the other into your laptop.  
(See "Inputs and Buttons" on page 2 for the input diagram.)

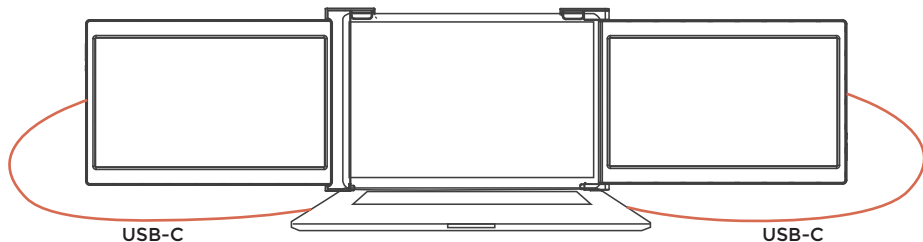


# Connection Methods

## 1. Two USB-C or Thunderbolt 3/4 Ports

Two Full Functioned Type-C/Thunderbolt-3/4 Ports Connection

If there are 2 full-functioned Type-C or 2 Thunderbolt 3/4 ports on the laptop, use two included Type-C cables to connect the laptop to the triple monitors.

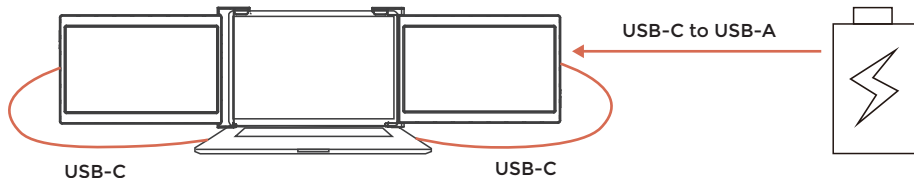


Notes:

Make sure that the laptop Type-C ports support power & data transmission, and has enough power supply above 5V/2A.

# Connection Methods

Some USB-C ports may not be able to transmit currents above 5V/2A, please connect an external power supply to better use the monitor.



## Notes:

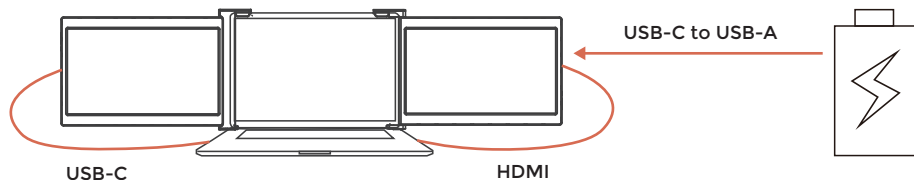
- ① Make sure the USB-C of your laptop is a Full-functioned USB-C port(support both video & data transmission).
- ② Make sure 5V/2A or above power can be supported through USB-C port. An external power supply of 5V/2A or above is needed for normal use (adjust brightness above 50).

# Connection Methods

## 2. One Full Functioned Type-C and HDMI Port Connection

If there's one full functioned Type-C port and one HDMI port on the laptop:

- 1) Use the included full functioned Type-C cable to connect one side of the monitor and the laptop.
- 2) Meanwhile, use the HDMI cable and an extra power supply (USB-C to USB-A cord) to connect the other side of the monitor and the laptop.



Notes:

The HDMI port does not provide power, so the monitor must be plugged into the power supply (5V/2A or Above) .

# EN Connection Methods

## 3. Other Connection Type (Extra Adapter Needed)

If you lack enough HDMI port for connection

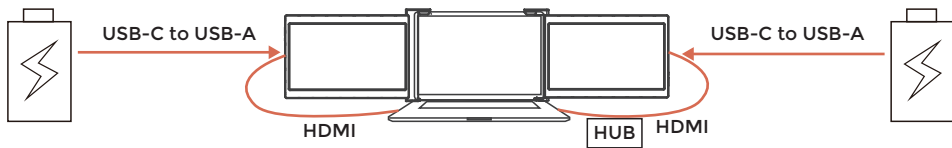
(1) Find a suitable HDMI hub for your laptop.

(2) You need to use 4 cables with an extra hub for connection:

First, connect one side of your monitor to laptop with a HDMI and a USB-C to USB-A cord.

Second, connect the HDMI hub to your laptop.

Finally, connect the other side of your monitor with another HDMI and USB-C to USB-A cord





### Notes:

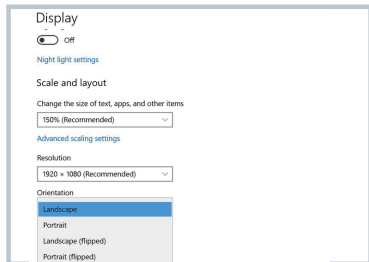
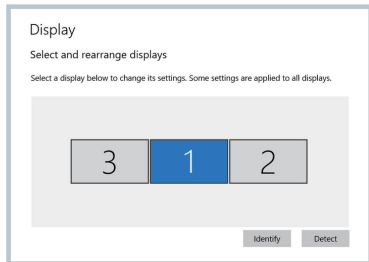
The HDMI port does not provide power, so the monitor must be plugged into the power supply (5V/2A or Above) .

# Laptop Display Configuration

## PC / WINDOWS

1. Go to your Display Settings (Start  > Settings  > System > Display)
2. Click and drag screens to configuration shown
3. If you need to set different display modes for multiple screens, please click 1/2/3 (click the "Identify" button down the screen to find the corresponding screen) and select the one, then enter into the "Multiple displays" menu to set
4. If any of the screens are upside down, click on the screen in the display menu. Then click on the "Orientation" dropdown menu and select "Landscape (flipped)"
5. To increase the zoom, click the "Change the size of text, apps, and other items" dropdown and select "150%"


\* Keeping three displays sync can be configured in setting of graphic card.  
If there is any issue please consult local distributor.





# EN Laptop Display Configuration

## MAC

1. Open “System Preferences” 
2. Select “Displays” from the menu
3. Click “Display Settings” from display menu (Fig. 1)
4. Click monitor name to set Mirror or Extended display (Fig. 2)
5. Click any display screen in the interface shown in Fig. 3 to adjust the screen position
6. To increase the zoom, click the “Scaled” radio button.

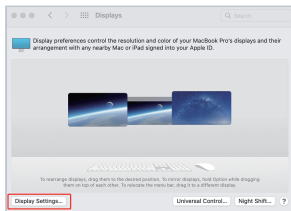


Fig. 1

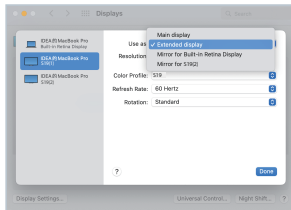


Fig. 2

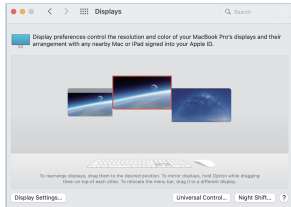


Fig. 3

# OSD Function Introduction

1. Press the "≡" Menu button to activate the OSD menu
2. Press "+" button to choose your settings
3. Press Menu "≡" button to confirm
4. Press "-" button to return to previous page



# EN OSD Setting

## Brightness

**Brightness:**

The adjusting range is from 0 to 100.

**Contrast:**

The adjusting range is from 0 to 100.

**Black Level:**

The adjusting range is from 0 to 100.

**Sharpness:**

The adjusting range is from 0 to 100.



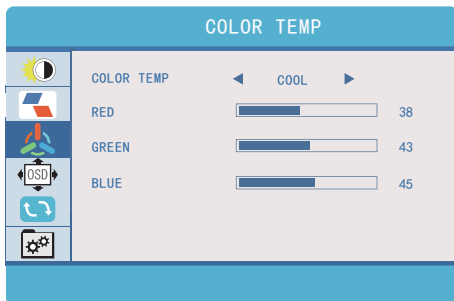
## Image

**ECO:** Preset display settings for various modes  
(Standard/ Game/ Movie/ Text/ FPS/ RTS Modes)

**DCR:** Select ON or OFF to enable or  
disable dynamic contrast ratio function

**Aspect:** Adjusts the aspect ratio to 4:3/ WIDE

# OSD Setting



## Color Temp

**Color Temp:** Enables the adjustment of each individual RGB color, or select a Warm or Cool preset level

**Red:** The adjusting range is from 0 to 100

**Green:** The adjusting range is from 0 to 100

**Blue:** The adjusting range is from 0 to 100

## OSD Setting

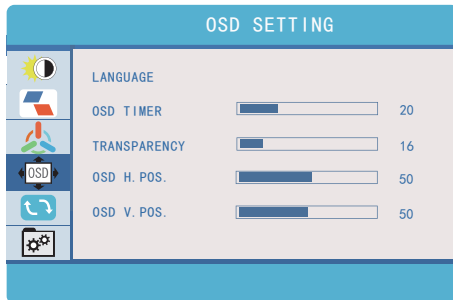
**Language:** Select OSD language. The selections are: English, French, German, Simplified Chinese, Italian, Spanish, Portuguese, Turkish, Polish, Netherlands, Japanese, Korean

**OSD Timer:**

Sets time-out for monitor settings menu (10-60 seconds)

**Transparency:**

Sets transparency of monitor settings menus

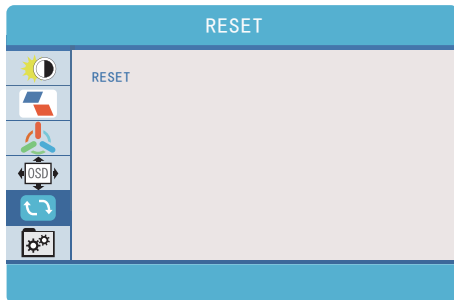


# EN OSD Setting

## Reset

**Reset:**

Selects RESET to revert all settings to the factory default mode



## MISC.

**Signal Source:**

Contains two signal sources Type C and HDMI

**Low Blue Light:**

Decreases blue light content in display

**HDR MODE:**

Enables HDR (High Dynamic Range) if connected to a compatible device

Contains three modes (off/ auto/ 2084)

# Tech Specs

EN

## DISPLAY

- Two 15 inch (diagonal) 1920\*1080, Full HD LCD IPS Panels
- 16:9 aspect ratio
- Adjustable brightness
- Power consumption: 5V 2A (Per screen)

## SIZE AND WEIGHT

- Weight: 3.1 pounds/ 1.4 kg
- Depth: 1 inch/ 2.53 cm
- Height: 9.65 inch/ 24.5 cm
- Width: 15.55 inch/ 39.5 cm

## INPUTS AND CONNECTIVITY (PER SCREEN)

- Thunderbolt3/4 / USB-C 3.1 input
  - Video and Power
- Mini-HDMI input
  - Video Only
- USB-C input
  - Power Only

## Adaptive laptop dimensions

- Length(left to right)  
325-450 mm (12.8-17.7 inch)
- Breadth(top to bottom) > 235mm (9.25 inch)
- Thickness (display panel) < 8 mm (0.31 inch)